

PRIMELINE

Sprayer



SPECIFICATIONS

SYSTEM	Hand-carry
TANK SIZE	0.5 gal, 2 gal, 3 gal, and 5 L tank
COMPATIBILITY	Water or oil-based insecticides, disinfectants
EXTENSIONS	9, 18 and 24 in.



SCAN FOR MORE
PRODUCT DETAILS



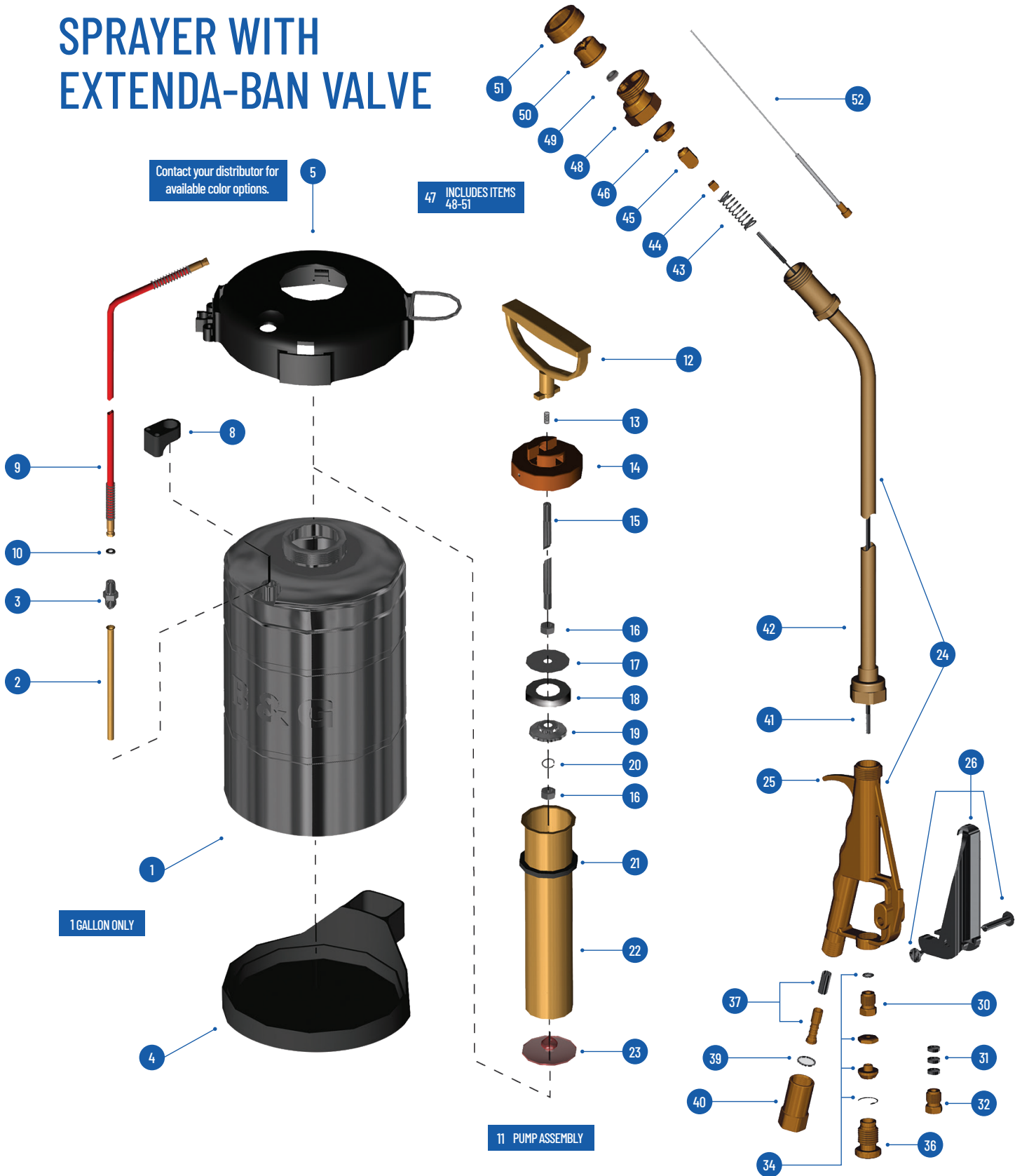
TANK TROUBLESHOOTING

SYMPTOM	POSSIBLE CAUSE	CORRECTIVE ACTION	PART DIAGRAM REFERENCE (PG.2)
Tank not holding pressure.	Tank cap is not sealing.	Tighten tank cap. Replace tank gasket (P-268).	2
Tank not getting air pressure.	Plunger cup is damaged or needs lubrication.	Replace plunger cup (NPO-277). Replace or add oil to leather plunger cup.	18
Pump cylinder filling with water when pumping.	Check valve is damaged or dirty.	Clean around the check valve at the bottom of pump cylinder. Replace the check valve (PV-266).	23
Holds pressure, but will not spray.	Nozzle clogged.	Clean with a soft brush.	See cleaning kit options (pg.6)
	Cracked siphon tube.	Replace.	2
	Siphon tube clogged.	Clean end.	See cleaning kit options (pg.6)
	Strainer clogged.	Clean strainer at the base of the valve, at the hose/valve junction.	37
Hose leaks at tank fitting.	Hose washer is damaged	Replace hose washer (D-51-P)	10

VALVE TROUBLESHOOTING

SYMPTOM	VALVE	POSSIBLE CAUSE	CORRECTIVE ACTION	PART DIAGRAM REFERENCE (PG.4-5)
Valve body leaking.	Extenda-Ban	Packing nut is loose, washers need replacing.	Tighten packing nut, replace packing washers (in D-124 Repair Kit).	24, 26
	XR Valve	O-ring or copper gasket needs replacing.	Replace O-ring at base of handle; replace copper gasket at base of valve stem (in GT-100 Repair Kit).	4, 10
	Ban-Drip	Packing nut is loose, rod packing needs replacement.	Tighten packing nut; replace rod packing (RP-48).	9
Tip leaking.	Extenda-Ban	Missing o-ring or spring behind tip #49. Soft seat gasket needs cleaning.	Clean or replace soft seat gasket, replace valve spring (in GD-124 Repair Kit).	40, 37
	XR Valve	Gaskets need replacing.	Use repair kit 22037510 and replace gaskets.	2
	Ban-Drip	Gaskets need replacing.	Use repair kit 22049900 and replace gaskets.	9-12

SPRAYER WITH EXTENDA-BAN VALVE



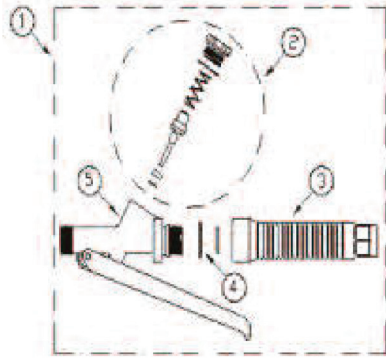
PRIMELINE

ITEM	PART #	ORDER #	ITEM DESCRIPTION
1	T-50	22024800	TANK (.5 GALLON)
	T-100	22025000	TANK (1 GALLON)
	T-200	22025100	TANK (2 GALLON)
	T-300	22025200	TANK (3 GALLON)
	T-500	22025250	TANK (5 LITER)
2	HS-297	22025600	TUBE, SIPHON (.5 GALLON)
	OS-297	22025700	TUBE, SIPHON (1 GALLON)
	TS-297	22025800	TUBE, SIPHON (2 GALLON)
	THS-297-01	22025901	TUBE, SIPHON (3 GALLON)
	FS-297	22025950	TUBE, SIPHON (5 LITER)
3	HA-298	22025300	ADAPTER, HOSE
4	TB-1	22049477	BOTTOM, TANK (1 GALLON ONLY)
5	TT-1	22049476	TOP, TANK (1 GALLON ONLY)
8	5700-H	22049475	HOLDER, TIP (NOT USED WITH ITEM 5)
9	D-50	22030100	HOSE, 4 FT., RED
10	D-51-P	22030400	WASHER, HOSE
11	PH-265	22026900	PUMP ASSEMBLY (.5 GALLON)
	PO-265	22027000	PUMP ASSEMBLY (1 GALLON)
	PF-265	22027125	PUMP ASSEMBLY (2 GALLON AND 5 LITER)
	PT-265	22027100	PUMP ASSEMBLY (3 GALLON)
12	P-275	22029800	HANDLE, PUMP
13	P-276	22029900	SPRING, PUMP LOCK
14	P-2 74	22029700	CAP, PUMP
15	PH-273	22029400	ROD, PLUNGER (.5 GALLON)
	PO-273	22029500	ROD, PLUNGER (1 GALLON)
	PF-273	22029650	ROD, PLUNGER (2 GALLON AND 5 LITER)
	PT-273	22029600	ROD, PLUNGER (3 GALLON)
16	P-269-SS	22028250	NUT, PLUNGER
17	P-272	22029200	PLATE, BACK
18	NP-277	22029000	CUP, POLYPROPYLENE
	NP-271	22028800	CUP, LEATHER
19	NP-270	22028600	PLATE, CUP SPREADER
20	P-269A	22028400	WASHER, LOCK
21	P-268	22028000	GASKET, PUMP
22	PH-267	22027400	TUBE, PUMP (.5 GALLON)
	PO-267	22027500	TUBE, PUMP (1 GALLON)
	PF-267	22027650	TUBE, PUMP (2 GALLON AND 5 LITER)
23	PV-266	22027200	VALVE, CHECK
24	120	22042101	VALVE, EXTENDA-BAN 9" (LESS TIP)
	220	22042203	VALVE, EXTENDA-BAN 18" (LESS TIP)
	420	22042778	VALVE, EXTENDA-BAN 24" (LESS TIP)

ITEM	PART #	ORDER #	ITEM DESCRIPTION
25	VB-147	22044450	VALVE BODY KIT
26	VT-140	22042800	TRIGGER, VALVE HOUSING, SCREW
28	-	22025150	STAINLESS SIPHON TUBE, PUMP CYLINDER
30	PN-150-2	22042455	NUT, PACKING
30A	PN-150-1	22042454	(1999 - 2000) NUT, PACKING
31	VP-151	22045099	PACKING, VALVE
32	PN-150	22044900	NUT, PACKING (PRIOR TO 1999)
34	AS-148	22044500	ADJUSTING SCREW, LOCK NUT, SNAP RING
36	SL-162	22046700	NUT, SAFETY LOCK
37	MS-145-50	22043800	STRAINER, 50 MESH SUPPORT, STRAINER
39	NG-146	22044200	GASKET, NYLON
40	SA-143	22043400	HOUSING, STRAINER
	VC-152	22045300	CABLE, VALVE 9"
	VC-153	22045400	CABLE, VALVE 18"
41	VC-163	22045450	CABLE, VALVE 24"
	VE-154	22045500	EXTENSION, BRASS 9"
	VE-155	22045600	EXTENSION, BRASS 18"
	VE-164	22045650	EXTENSION, BRASS 24"
42	VE-154-SS	22045510	EXTENSION, STAINLESS STEEL 9"
	VE-155-SS	22045610	EXTENSION, STAINLESS STEEL 18"
	VE-164-SS	22045710	EXTENSION, STAINLESS STEEL 24"
43	VS-156	22045700	SPRING, SEAT STEM
44	SSL-157	22045900	NUT, SEAT STEM
45	SS-158	22046100	STEM, SEAT
46	SP-159	22046300	GASKET, SOFT SEAT
47	5850-CC	22049466	B&G 4 WAY C&C TIP ASSEMBLY (PARTS 48-51)
	5850	22049451	TIP ASSEMBLY (NO C+C)
48	9751-M	22049300	HOLDER, B&G 4 WAY C+C TIP
49	4190	22034700	GASKET, VITON®
	5800-CC	22049467	TIP, B&G 4 WAY C+C
50	5800	22049452	TIP ONLY (NO C+C)
	4596	22034500	RETAINER, TIP
51	5700-B	22049200	EXTENSION, C+C
	22042300	22042300	COMPLETE 9" VALVE WITH TIP
52	22042350	22042350	COMPLETE 9" VALVE WITH C+C TIP
	22042400	22042400	COMPLETE 18" VALVE WITH TIP
53	22042450	22042450	COMPLETE 18" VALVE WITH C+C TIP
	22042700	22042700	COMPLETE 24" VALVE WITH TIP
54	22042750	22042750	COMPLETE 24" VALVE WITH C+C TIP

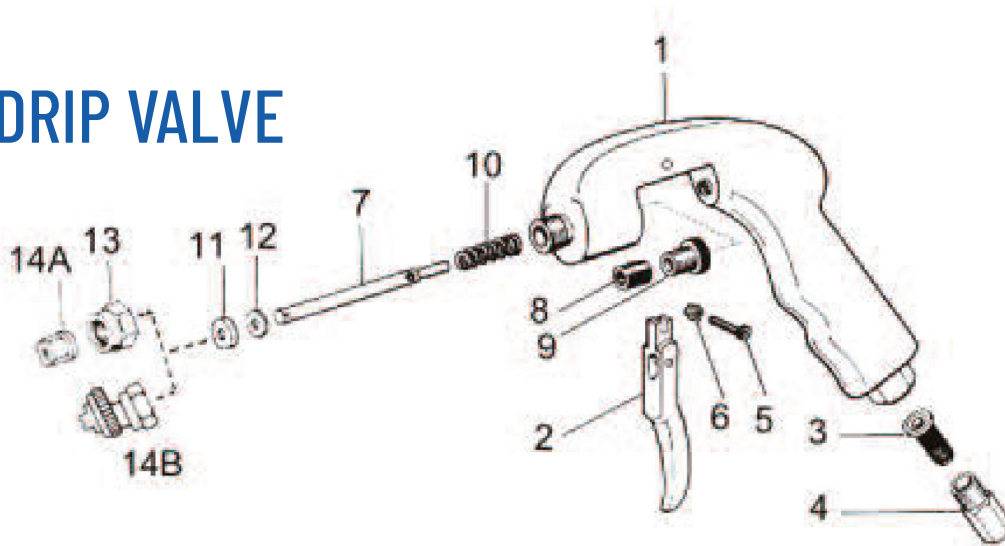
ALL REPLACEMENT PARTS ARE AVAILABLE FOR SALE

XR VALVE



ITEM	PART #	ITEM DESCRIPTION
1	22037500	VALVE ASSEMBLY
2	22037510	XR VALVE KIT
3	22037503	HANDLE
4	22037508	O-RING (VITON)
5	22037501	XR-VALVE BODY

BAN-DRIP VALVE



ITEM	PART #	ITEM DESCRIPTION
1	22039700	VALVE BODY
2	22039800	VALVE TRIGGER
3	22039900	MESH STRAINER
4	22040100	PIPE STRAINER
5	22040300	TRIGGER SCREW
6	22040500	TRIGGER NUT
7	22040700	VALVE ROD, PIN
8	22040900	BRASS PACKING NUT

ITEM	PART #	ITEM DESCRIPTION
9	22041100	ROD PACKING
10	22041300	ROD SPRING
11	22041500	SEAT GASKET HOLDER
12	22041700	SEAT GASKER
13	22033100	TIP CAP
14A	22032100	FINE FAN TIP
14B	22049451	MULTEEJET ASSEMBLY
Optional	22049466	B&G 4 WAY C&C TIP ASSEMBLY

ALL REPLACEMENT PARTS ARE AVAILABLE FOR SALE



REPAIR KIT

ORDER #	ITEM DESCRIPTION
22049600	Kit with washers, gaskets and springs designed to help rebuild sprayers with XR Valves.
22050100	Kit with washers, gaskets and springs designed to help rebuild sprayers with Extenda-Ban Valves.



TEAM REPAIR KIT

ORDER #	ITEM DESCRIPTION
22050400	Repair kit with washers, gaskets and springs designed to help rebuild multiple sprayers with XR Valves.
22050300	Repair kit with washers, gaskets and springs designed to help rebuild multiple sprayers with Extenda-Ban Valves.



TECHNICIAN & OFFICE EMERGENCY KIT

ORDER #	ITEM DESCRIPTION
23088125	Technician's Kit contains common washers, gaskets and springs designed to help repair your sprayer.
23088126	Office Emergency Kit contains larger quantities of materials from the Technician's Kit, but also includes less common parts including replacement parts for termite guns, cone nozzles, foggers and check valves.

ALL REPLACEMENT PARTS ARE AVAILABLE FOR SALE